



CHURCHILL
COUNTRY & EQUESTRIAN

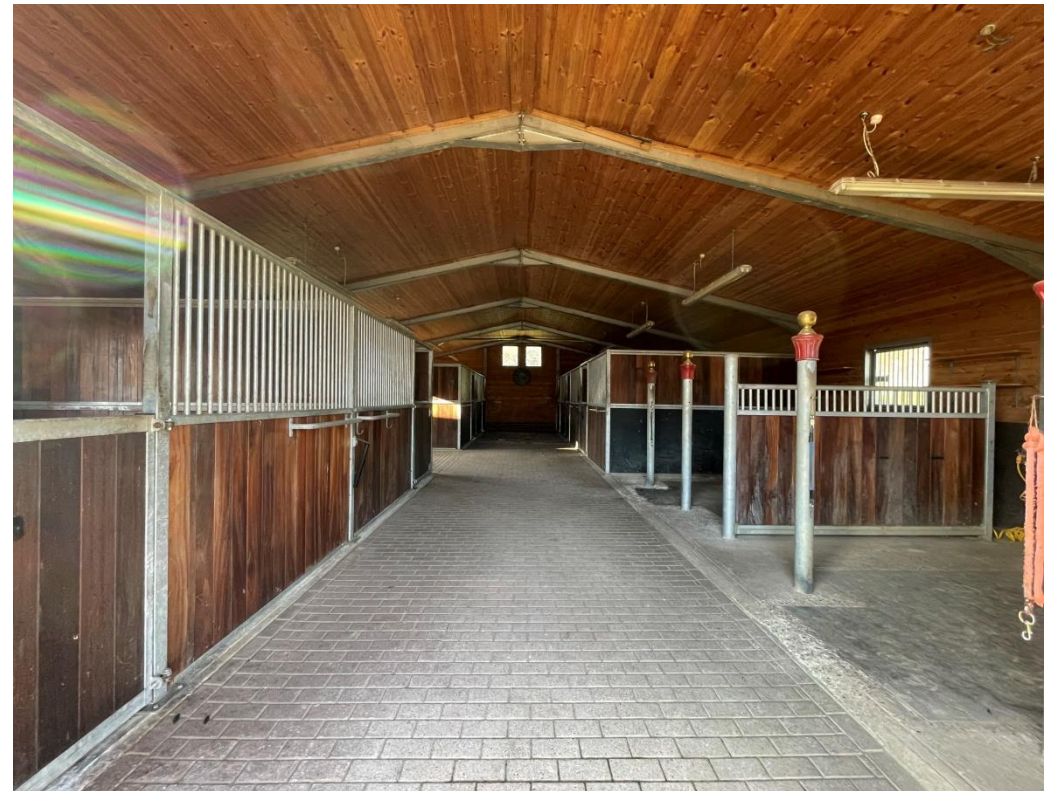
BROOM STABLES

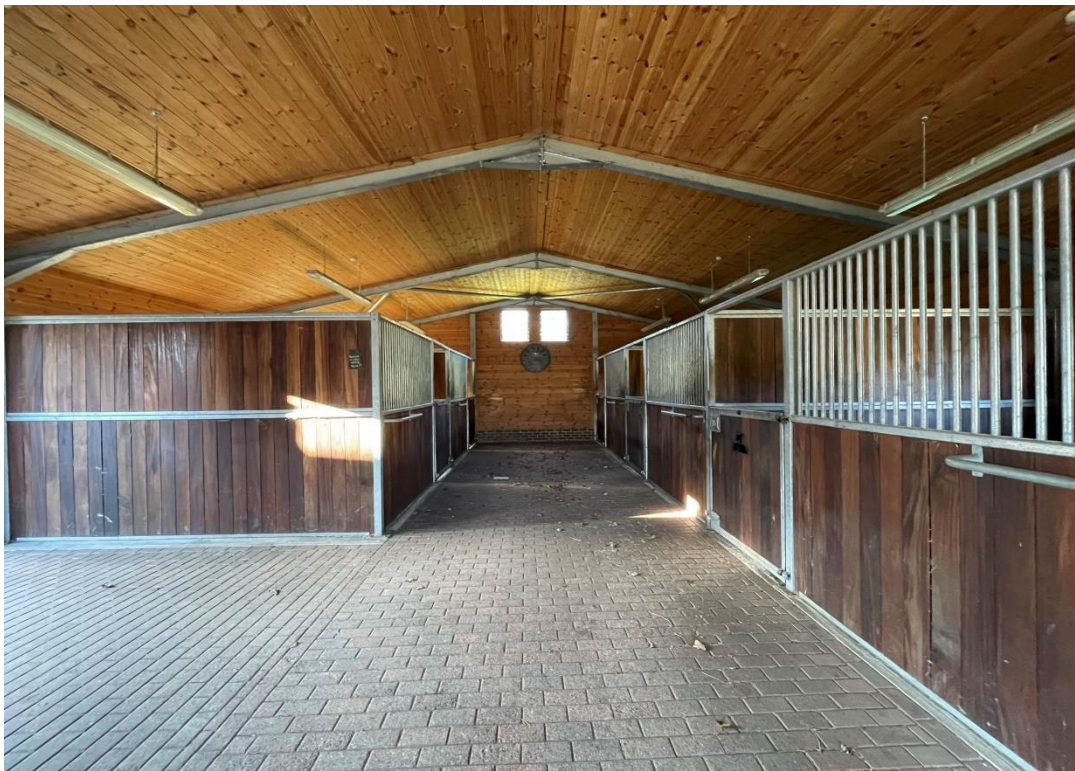
CROWBOROUGH, EAST SUSSEX. Monthly rental £2,700pcm

An impressive, compact yard in East Sussex; Broom Stables has extensive equestrian facilities ideal for a private or professional set up.

Attractive and beautifully presented stable yard close to the Ashdown Forest • 11 stables • 60m x 20m outdoor arena with viewing platform • accommodation • enclosed all weather lunge pen/turn out • horse walker • two wash bays • large tack / rug store • hay store • parking for multiple vehicles • gated entrance • 4 acres of well fenced paddocks • smart one bedroom accommodation, to be newly renovated • Further accommodation may be available by separate negotiation

The attractive and compact yard is split into three, with 7 internal boxes and two wash bays in the large American-style barn, all with automatic waters, a block of 3 loose wooden boxes and a further one box self-contained yard. The full-size outdoor arena measures 60m x 20m, beautifully kept with flower beds and a wooden viewing platform. The yard also comprises a hay storage barn, a large rug/tack room with WC, enclosed all weather lunge pen/turn out and a horse walker. Broom Stables are accessed through a gated entrance with space for lorry and car parking. The yard includes a smart one-bedroom apartment, which will be newly renovated (Jan 2023). Further accommodation may be available by separate negotiation, please as the agent for details.









UKLANDand
FARMS.co.uk

CHURCHILL
COUNTRY & EQUESTRIAN

 OnTheMarket.com

Viewing strictly by appointment through the Landlord's Sole Agents – Churchill Country & Equestrian Estate Agents – 01403 700222

MONEY LAUNDERING REGULATIONS 2003 intending purchasers will be asked to produce identification and proof of financial status when an offer is received. We would ask for your co-operation in order that there will be no delay in agreeing the sale. THE PROPERTY MISDESCRIPTIONS ACT 1991 The Agent has not tested any apparatus, equipment, fixtures and fittings or services and so cannot verify that they are in working order or fit for the purpose. A Buyer is advised to obtain verification from their Solicitor or Surveyor. References to the Tenure of a Property are based on information supplied by the Seller. The Agent has not had sight of the title documents. A Buyer is advised to obtain verification from their Solicitor. You are advised to check the availability of this property before travelling any distance to view. We have taken every precaution to ensure that these details are accurate and not misleading. If there is any point which is of particular importance to you, please contact us and we will provide any information you require. This is advisable, particularly if you intend to travel some distance to view the property. The mention of any appliances and services within these details does not imply that they are in full and efficient working order. These particulars are in draft form awaiting Vendors confirmation of their accuracy. These details must therefore be taken as a guide only and approved details should be requested from the agents